

Over **2,000** architects & engineers are calling for a new, genuine, independent investigation.

Architects & Engineers for 9/11 Truth (AE911Truth)

Architects & Engineers for 9/11 Truth is a non-profit corporation – a non-partisan association of architects, engineers, and affiliates dedicated to exposing the falsehoods and revealing truths about the destruction of the 3 World Trade Center high-rises on 9/11/01. Visit our website. Educate yourself. Take action!

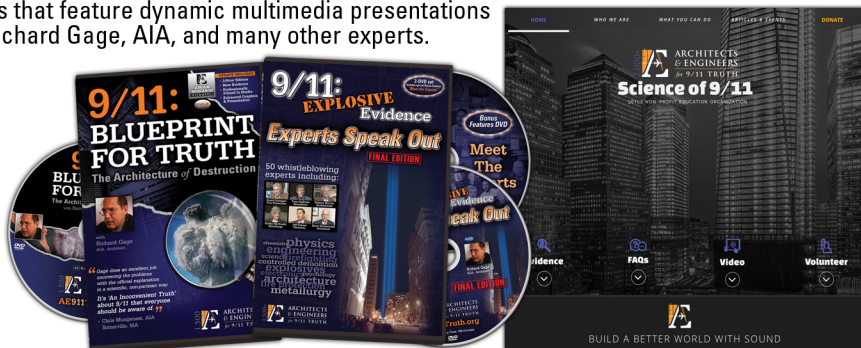
Why We Are Re-Examining the Destruction of the World Trade Center

There was never a proper investigation. NIST and FEMA excluded critical forensic evidence, such as described in this and other documents.

We have assessed the evidence that exposes the fraudulent official reports by the 9/11 Commission, FEMA and NIST. Every week, architects, engineers and others continually sign our petition calling for a new investigation. Join us!

Learn More at AE911Truth.org

A vast array of information and resources is available on our website, including informative DVDs that feature dynamic multimedia presentations by Richard Gage, AIA, and many other experts.



The DVDs

The Website

“ AE911Truth exposes NIST falsehoods – A localized failure in a steel-framed building like WTC 7 cannot cause a catastrophic collapse like a house of cards at free-fall acceleration without a simultaneous and patterned loss of several of its columns at key locations within the building. ”
— Kamal Obeid, PE, Structural Engineer

“ The destruction was too symmetrical to have been eccentrically generated. The destruction was symmetrically initiated to cause the buildings to come apart as they did. ”
— Harry Robinson III, FAIA, Architect

9/11 Truth: The World is Ready!

It's time to talk about it

- Why do 2,300 architects and engineers worldwide demand a new WTC 9/11 investigation?
- Why did a 3rd tower WTC 7 fall? and... at free-fall?
- Why was nano-thermite found in the WTC dust samples?
- Why did 163,000 tonnes of concrete pulverize in mid-air?
- Why did hundreds of witnesses report explosions?
- Why is the media censoring these questions?

Trust Your Eyes, the Facts, and the Laws of Physics

WTC 7

World Trade Center Building 7:
This 47-story skyscraper, never hit by an airplane, was the third tower destroyed on September 11th.

The destruction of WTC 7 has all the characteristics of a **CONTROLLED DEMOLITION** with explosives:

- The building falls almost symmetrically straight down in less than 7 seconds - and at **free-fall acceleration** for 8 stories - as admitted by the National Institute of Standards and Technology (NIST).
- The overall building mass falls uniformly **through what was the path of greatest resistance**. This requires a precisely timed, patterned removal of critical columns.

The structure of a large, fireproofed steel-framed building cannot be completely destroyed by **ISOLATED POCKETS OF FIRE** nor by "thermal expansion" as claimed by NIST.

A single, localized failure, such as NIST's unseated girder, could not cause the systematic and total **FAILURE OF 400 OTHER STRUCTURAL STEEL CONNECTIONS PER SECOND**.

Numerous incidents and recorded statements reveal **FOREKNOWLEDGE**. These include a countdown, warnings, and announcements from both CNN and the BBC of the "collapse" ... before it even happened!



Evidence Excluded from the NIST Report

- 1 Most of the debris ended up in this compact pile – centered within the original footprint.



- 2 The 47-story steel-framed structure was **dismembered** and reduced to a small pile only a few stories high – with near complete destruction – unmistakable signs of a controlled demolition with explosives.

- 3 **Extremely high temperatures** – far above those of normal office fires – persisted for weeks in the pile, as indicated by various sources (e.g. infrared images by MTI, Earth Data and NASA).

- 4 The Federal Emergency Management Agency (FEMA) documented in Appendix C of its report a "**severe high temperature corrosion attack on the steel**" – sulfur and molten iron penetrated into the steel. Office/jet fuel fires cannot account for this. Other research revealed the signature of thermite, which creates molten iron.



- 5 FEMA's May 2002 report acknowledged that its hypothesis had only a "low probability of occurrence" and that "further investigation and analysis were required". By that time, however, almost all WTC 7 steel – evidence itself of the crime scene – had already been illegally **removed and destroyed**.

WTC Twin Towers

The destruction of WTC 1 & 2 shows typical features of controlled demolition, distinctive characteristics of high explosives, and evidence of the use of thermite.

- 1 The structural steel frame below would have stopped any collapse from above, but the **destruction zone** not only **proceeded symmetrically** downwards, it even **accelerated constantly** through what was the path of *greatest* resistance – 400 heavy steel columns.
- 2 Extremely **rapid onset** of destruction.
- 3 Blast pressure front effects: **multi-ton steel sections** ejected laterally – up to 180 meters away at 80 km/h.
- 4 **Mid-air pulverization** of 163,000 tonnes of concrete. Large volumes of metal decking, floor trusses and "pancaked" floors were also missing.
- 5 Massive volumes of rapidly expanding **pyroclastic-like clouds**.
- 6 **Isolated high velocity ejections**, indicating explosives, visible up to 60 stories below the progressing destruction zone.
- 7 **Complete destruction** of the buildings, including shattering of almost all structural frames.
- 8 Evidence for **extremely high temperatures** (1500°C) before, during, and after the destruction.
- 9 Evidence of **thermite** found in previously molten metal, WTC dust and steel.
- 10 Sophisticated, energetic **nano-thermite** composite material discovered and documented in WTC dust samples.
- 11 Over one hundred first responders reported **explosions and flashes of light**.
- 12 **No precedent** for skyscraper collapse due to fire.

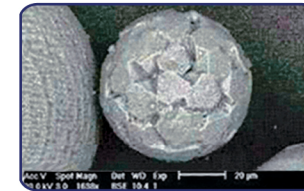


Heavy structural steel pieces were ejected laterally, many of them leaving rapidly expanding dust and smoke trails – a geometry caused by explosives, not gravitational collapse

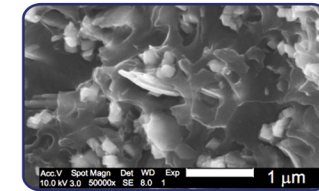
The Truth is in the Evidence



FDNY and others found several tons of "**molten steel** ...flowing like lava" in the ruins. 760°C office fires cannot produce 1500°C molten steel/iron. **Thermite incendiaries** can.



Microspheres formed from molten iron and other elements were found in the WTC dust by USGS, the RJ Lee Group, the EPA, and independent scientists. Thermite reactions account for the ubiquitous spheres.



WTC dust samples contain small chips of **highly energetic nano-thermite** composite materials uniformly nano-sized, appropriately proportioned, and embedded in an organic matrix with gas-generating properties.